



API RP 1004 Vapour Recovery Coupler for bottom loading

Silea Vapour Recovery Coupler is used in the petrochemical industry when there is the need to recover vapours during the products loading phase.

Designed in accordance with the API RP1004 norm, it can be supplied with different types of outlet connections and is made of an aluminium alloy.

The surfaces subjected to wear are hard-coated .

The standard Fluoroelastomer (viton®) seals are easily removable to allow swift maintenance operations.

This type of coupler prevents vapours spillage during the connection/disconnection operations and enhances safety conditions for the operators.

The Silea vapour recovery coupler is interlocked only opening when it is properly connected to the adaptor on the tank-truck. It is equipped, in fact, with a check valve that allows the vapours recovery solely after the poppet inside the vapour recovery coupler is activated.

In consideration of the fact it conforms to the API RP 1004 specifications, the SILEA 0513RV can also be used with adaptors of other manufacturers.



Technical specifications:

Design pressure: 0,3 bar

Testing pressure: 0,5 bar

Operating pressure: 0,055 bar

Flow rate: up to 800 m³/h of vapour

Design temperature: -15°C / +65 °C

Seals: VITON

Material of construction: aluminium

Ref. 05139003F



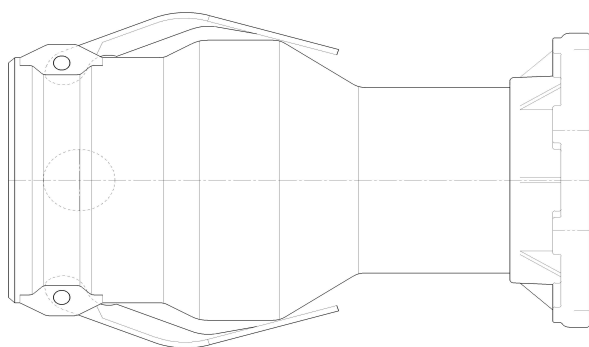
Available models

Ref. 05139003F

Description: 4" Vapour recovery coupler with check valve

Inlet Connection: Camlock 4"

Outlet connection: 4" TTMA flanged

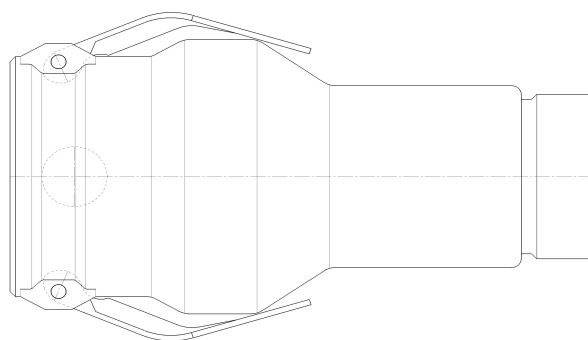


Ref. 05139003FI3

Description: 4" Vapour recovery coupler with check valve

Inlet Connection: Camlock 4"

Outlet connection: threaded G 3" female

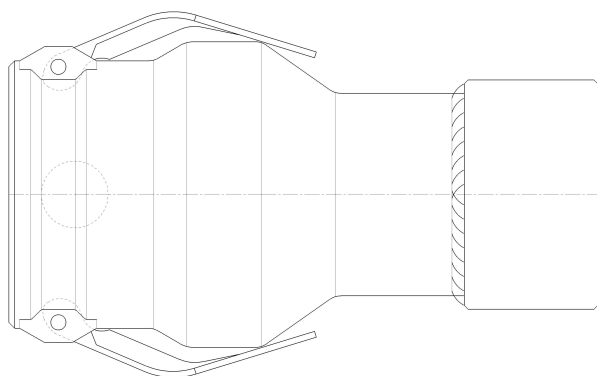


Ref. 05139003FI4

Description: 4" Vapour recovery coupler with check valve

Inlet Connection: Camlock 4"

Outlet connection: threaded G 4" female

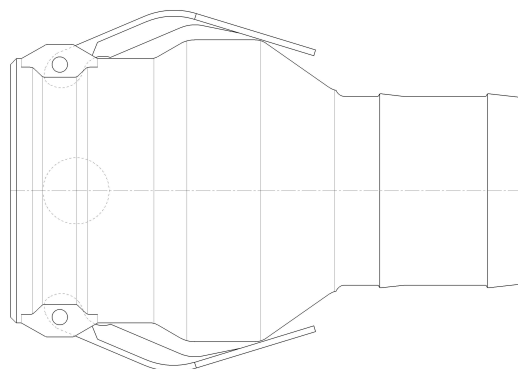


Ref. 05139003P

Description: 4" Vapour recovery coupler with check valve

Inlet Connection: Camlock 4"

Outlet connection: with hose fitting





Accessories for Silea Vapour Coupler

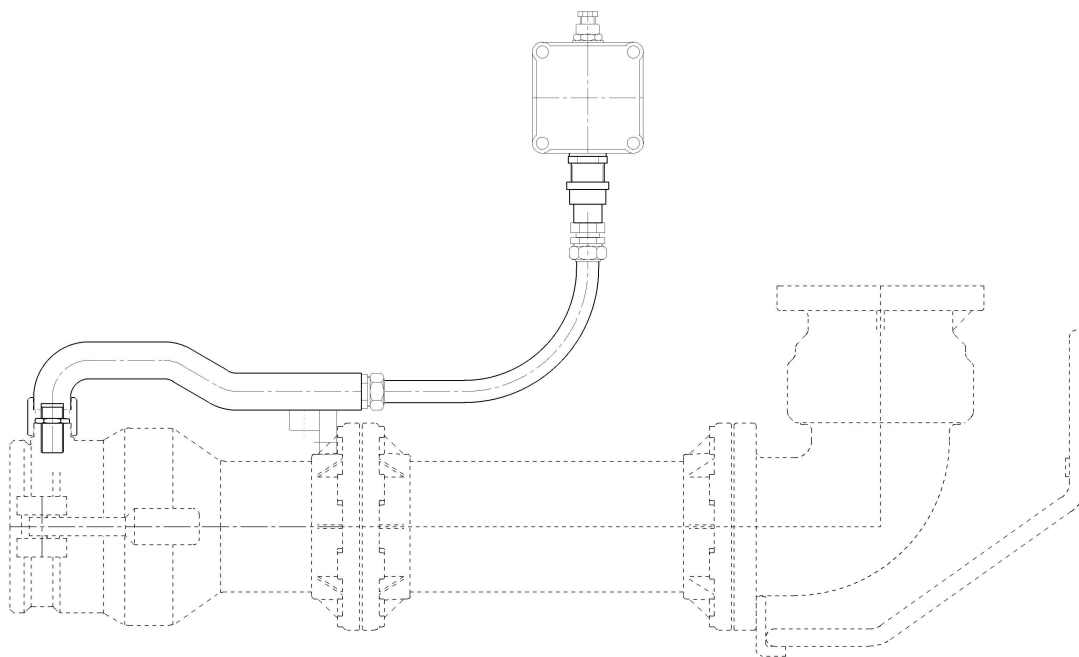
➤ **Ref. 31620102 Micro switch Eex ia (NAMUR)**

Micro switch Eex ia (NAMUR) for Vapour recovery Coupler.

It is suitable for all Silea vapour recovery coupler configurations.

It is connected to the base of the loading arm and it is equipped with a junction box. The switch detects when the vapour recovery coupler is connected to the tank adaptor.

Material of construction: aluminium body and S.S. AISI 304



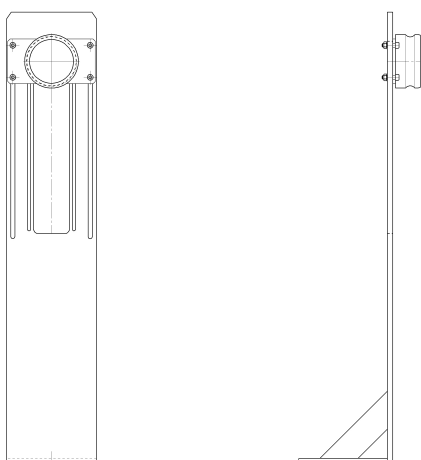
Ref. 31620102



Accessories for Silea Vapour Coupler

➤ PARKING DEVICES

Ref. 1405-PARK200	Ref. 1405-PARK201	Ref. 1405-PARK202
Simple parking device. It allows parking position when the API coupler is not in use.	Parking device equipped with micro switch Eex d ¹ . The switch detects when the vapour recovery bottom loading is in the parking position.	Parking device equipped with micro switch Eex ia ² . The switch detects when the vapour recovery bottom loading is in the parking position



Ref. 1405-PARK200

Technical specifications:

Material of construction: carbon steel
and aluminium

Weight: 26 kg approx.

Height: 1010 mm

It allows the operator to place the
loading arm in a parking position when
it is not involved in filling operations

¹

Eex d - Main features: Protection group: II C - Temperature class: T6 - Protection: IP65 - CE Certificate: - II 2 GD
Eex d IIC IP65 T85° C - Operating temp: -20/+40 °C – SPDT 6A 220V AC (minimum 24V DC)

² Eex ia Inductive proximity switch NAMUR - Main features: 1000Hz, IP67,
ATEX II 1GD EEx ia IIC T6 - Operating temp: -25/+ 100 °C – 8V DC